



As the body of believers, we are

CALLED, COMMITTED, COMMISSIONED

Called - And you also are among those who are called to belong to Jesus Christ. Romans 1:6

Committed - But your hearts must be fully committed to the Lord our God, to live by His decrees and obey his commands. 1 Kings 8:61

Commissioned - Therefore go and make disciples of all nations, baptizing them in the name of the Father and of the Son and of the Holy Spirit... Matthew 28:19

JANUARY 8, 2012

A STEPHEN MINISTRY CONGREGATION

SAINT ANDREWS PRESBYTERIAN CHURCH
2ND SUNDAY AFTER CHRISTMAS
9:00AM JANUARY 8, 2012

MUSIC AS WE GATHER

GREETING AND ANNOUNCEMENTS

* SENTENCES OF SCRIPTURE

* SONG

MORNING PRAYER AND THE LORD'S PRAYER

RESPONSE

SCRIPTURE READING

SERMON

OFFERING & PRAYER OF DEDICATION

SACRAMENT OF THE LORD'S SUPPER

* SONG

* BENEDICTION



TODAY'S DUTY DEACON is Rachel Matthews.

If you should need to leave the Sanctuary during worship, please note the sound from the Sanctuary is piped into the Conference Room/Library, as well as in the narthex.

Music reprinted by permission, CCLI #847121.

CDs and tapes of today's worship service are available; please email Jim Williams, at jwilliams@sapc.com to request a copy.

Sermons are online at sapc.com (under 'Ministries,' click the 'Worship' tab).

A SERVICE FOR THE WORSHIP OF GOD

2ND SUNDAY AFTER CHRISTMAS, JANUARY 8, 2012 AT 11 AM

*Those who are able are invited to stand. **Latecomers may be seated.

If you need assistance to hear the service, please see our sound technician at the back of the Sanctuary.

PRELUDE

Meditation on "Showalter"

Ben Logan

Our acolyte, Marshall Annab, carries the light into the sanctuary, signifying the presence of Christ, the light of the world (John 8:12).

Please pray for the blessing of God upon this service.

CHIMES

MOMENT OF SILENCE

WELCOME AND ANNOUNCEMENTS**

Please pass the Friendship Register found at the end of your pew. Visitors are asked to leave an address so we might send you information about our church family.

If you should need to leave the Sanctuary, please note sound is piped into the Conference Room/Library, opposite the Sanctuary, as well as in the narthex.

We share Friendship Bread with our first-time visitors.

ADORATION

CHORAL INTROIT

Blessed Jesus, at Your Word

LIEBSTER JESU

Chancel Choir

*CALL TO WORSHIP (from Psalm 29)

Mark Whitley

Leader Ascribe to the Lord, O heavenly being,
ascribe to the Lord glory and strength.

**People Ascribe to the Lord the glory of God's name;
worship the Lord in holy splendor.**

Leader The voice of the Lord is powerful;
the voice of the Lord is full of majesty.

**People May the Lord give strength to God's people!
May the Lord bless us with peace!**

Leader Let us worship God!

*OPENING PRAYER AND THE LORD'S PRAYER, hymnal page 16

HYMN OF PRAISE No. 308*

O Sing a Song of Bethlehem

KINGSFOLD

CONFESSION

GOD'S INITIATIVE OF GRACE

PRAYER OF CONFESSION (unison)

Creating God, you formed the world and called it good.

Yet, we take our earth for granted:

**consuming its resources, polluting its air and water,
ignoring its beauty.**

**You called forth humanity and called it good, yet we treat one another
with disrespect:**

ignoring those in pain, choosing violence over peace.

We repent of the many ways we have dishonored your gifts.

**We turn our lives toward you, opening ourselves to the power of your
transforming love.**

Shine the light of your grace upon us, that we may see your way.

**Send your Spirit upon us, giving us the power to proclaim and live
your word.**

SILENT CONFESSION

DECLARATION OF FORGIVENESS AND CALL TO OBEDIENCE

***THE GLORIA PATRI Hymn No. 579**

Henry W. Greatorex, 1851

***GREETING**

PROCLAMATION

CHILDREN'S MESSAGE

Ann Wright

After the message, children pre-K and K go to room 6; 1st graders to room 5.

HYMN No. 320*

The Lone, Wild Bird

PROSPECT

PRAYER OF THANKSGIVING AND INTERCESSION

ANTHEM

Descend, O Heavenly Dove

Mark Schweizer

Chancel Choir

SCRIPTURE READING

Mark 1:4-11 (NRSV)

Lindsay Woodard

Pew Bible (NIV), pg. 707

At the conclusion of the reading:

Reader This is the Word of the Lord.

People **Thanks be to God.**

SERMON

From Common to Sacred

Diane Knauf

RESPONSE

*AFFIRMATION OF FAITH (unison, from *A Brief Statement of Faith*, 10.2)

We trust in Jesus Christ, fully human, fully God.

Jesus proclaimed the reign of God:

**preaching good news to the poor and release to the captives,
teaching by word and deed and blessing the children,
healing the sick and binding up the brokenhearted,
eating with outcasts, forgiving sinners,
and calling all to repent and believe the gospel.**

Unjustly condemned for blasphemy and sedition,

**Jesus was crucified, suffering the depths of human pain
and giving his life for the sins of the world.**

God raised this Jesus from the dead,

**vindicating his sinless life,
breaking the power of sin and evil,
delivering us from death to life eternal.**

GIVING OF TITHES AND OFFERINGS

Offertory

On Jordan's Stormy Banks

Tom Birchwood

*The Doxology (Hymn No. 592)

*The Prayer of Dedication

COMMUNION HYMN No. 505**

Be Known to Us in Breaking Bread

ST. FLAVIAN

THE SACRAMENT OF THE LORD'S SUPPER

Invitation

The Great Prayer of Thanksgiving

Leader The Lord be with you.

People And also with you.

Leader Lift up your hearts.

People We lift them up to the Lord.

Leader Let us give thanks to the Lord our God.

People It is right to give our thanks and praise.

The Words of Institution

Distribution of the Elements

Those who wish to receive communion may come forward, row by row. The servers will offer you the bread and cup. Please take the bread and dip it into the cup and partake of the elements.

If you should need gluten-free wafers, they are available at the far left station at the front of the Sanctuary, along with the cup.

If you are unable to come forward, please raise your hand at communion's conclusion and the servers will come to you.

Unison Prayer

**Eternal God,
we give you thanks for this holy mystery
in which you have given yourself to us.
Grant that we may go into the world
in the strength of your Spirit,
to give ourselves for others
in the name of Jesus Christ our Lord. Amen.**

*HYMN No. 522**

Lord, When I Came Into This Life

LAND OF REST

*BENEDICTION

*CONGREGATIONAL RESPONSE - HYMN NO. 535

Go With Us, Lord

TALLIS' CANYON

**Go with us, Lord, and guide the way
Through this and every coming day,
That in Your Spirit strong and true
Our lives may be our gift to You.**

POSTLUDE

Ancient of Days

Paul Taylor

*The acolyte carries the light from the sanctuary, reminding us that
`Christ calls us to be the light of the world (Matthew 5: 14-16).*

Note on the organ voluntaries: Devout Presbyterian layman, Anthony Showalter, quoted Deuteronomy 33:27 when comforting sorrowing friends. He set that verse to music and published the hymn, "Leaning on the Everlasting Arms" in 1887.

Baptist minister Samuel Stennet (1727-95) wrote the hymn text on which the offertory is based. It reminds the believer that as we now stand on "stormy banks," we are bound for the "Promise Land."

The hymn text, "Ancient of Days," is appropriately sung on celebratory occasions, for it addresses God's everlasting love and favor. One of the many tunes to which it is sung is "Italian Hymn," heard today.



The Duty Deacon is Rachel Matthews.

If you should need to leave the Sanctuary during worship, please note the sound from the Sanctuary is piped into the Conference Room/Library, as well as in the narthex.

Music reprinted by permission, CCLI #847121.

CDs and tapes of today's worship service are available;
please email Jim Williams at jwilliams@sapc.com.

SERMONS are online at sapc.com (under 'Ministries,' click the 'Worship' tab).

Our Care Ministry

THE DIACONATE'S CARE MINISTRY coordinates all of the many wonderful care groups that operate within Saint Andrews on behalf of its members. Cards, meals, transportation and other ministries are available and ready to help. When you let the church office know that you are ill, requiring care or hospitalization, your name will be given to our Deacons care coordinator for follow-up. A care deacon will be assigned to you to help you through your difficult time. With your agreement and based on your situation, the care deacon will formulate an individualized care plan and coordinate the services provided until you are no longer in need.

MINISTRIES OF CARE AND SUPPORT INCLUDE

ADULTS CARING FOR LOVED ONES: This group provides information and support for anyone caring for loved ones with a debilitating condition at home, in a facility or from a distance. We welcome anyone in our community who has needs; please contact Trenna Perkins at 919-847-4047.

ANGEL CARE: This ministry within our Women of Saint Andrews offers support through meals, rides, cards and/or a phone call. If you have a new baby, hospital stay, death, accident, or just a concern, please call the church at 847-1913.

INTERCESSORY PRAYER TEAM: Members gather Wednesdays at 11:15am in the Sanctuary to pray. You are invited to join them in prayer. You may also call the church at 847-1913 or use a prayer card to submit a request. Contact Jean Hill (jeanlvall5@gmail.com) for information.

PRAYER SHAWL MINISTRY: Knitters make prayer shawls for those who need our love, support, and concern during troubling times. For information, pick up a brochure in the narthex. If you or someone you love needs a shawl, call Anne Lawson at 919-846-5636.

STEPHEN MINISTRY: This ministry offers one-to-one, confidential Christian care, given by a trained lay person. To receive care, please call Associate Pastor Diane Knauf at 919-847-1913.

SUPPORT GROUP FOR GLBTs and THEIR FAMILY AND FRIENDS: A pastoral ministry to those wrestling with gender identity issues. For more information, please call Art King at 919-302-0804 or call the church office at 919-847-1913.

Prayer Requests

PASTORAL CARE

Outside of church office hours, please call 740-6038 for Pastoral Care.
The Pastor-on-Call this weekend is Larry Duncan.

CURRENT CARE CONCERNS*

RECENT SURGERIES OR ILLNESSES (members & immediate family listed 2 weeks)

Chris Osterhoudt; Ellen Gates' mother-in-law, Eleonore MacLean

ONGOING REQUESTS (members & immediate family listed 2 months)

Carole Hostetler - recovering from surgery

Terry Amos' brother - recovery from surgery/stroke

Anne Stark's father - chemotherapy

Richard and Elaine Mueller's daughter-in-law - high risk pregnancy

Jackie Jenkins' mother - illness

Brenda Jones - illness

Stephanie Mitchell's sister - illness

Beverly Lovelace's mother - illness

Wendy Foreman's brother - health issues

TO THE CHURCH TRIUMPHANT (members & immediate family listed 2 weeks)

David Lane's father, Frank Lane

SERVING ABROAD (members & immediate family listed 1 year)

Dick and Elaine Mueller's son (military); Aaron Mahler (military);

Drew Knauf's niece, Michelle Knauf (military)

PRAYER FAMILIES OF THE WEEK (We go through the congregation alphabetically.)

Chris, Lori, Harley, and Garrett Ransom; Julie Rashid; Nancy Rattelade; Henry and Frances Read; and Mark, Marcie, Chris, and Morgan Reinhard.

*Please contact the church office with your prayer concern. All prayer requests (including non-member needs) are placed on our comprehensive prayer list posted in the church office next to the reception desk, and may be emailed to our church officers and intercessory prayer team. Church members and immediate family can be listed in the worship bulletin for the durations listed above. After that time, your request will remain on the prayer list in our office until you tell us prayers are no longer required. We depend on your continued communication to know the status of your concern and how best to pray for you. Please stop in the church office to review the comprehensive prayer list and pray for those in our congregation and beyond. Questions? Contact Rev. Diane at dknauf@sapc.com or 847-1913, ext. 102.

Announcements

WELCOME TO SAINT ANDREWS

We are so glad you are worshipping with us! We are a friendly, active, age-diverse congregation called to learn and serve those in need. Our church is of the reformed tradition - we value our heritage and our relationship as a member of the Presbyterian Church (USA). If you would like to receive our weekly email updates on the latest events, or our quarterly newsletters by mail, call the church office at 847-1913. Be sure to check out our website at www.sapc.com, find us on Facebook, and on Twitter as @SAPCgoodnews.

FLOWERS

The flowers are given to the Glory of God by Jen, Jarrod and Mary Evans Baccus, and Weldon DeMent in celebration of Emma DeMent's 14th birthday.

ANNOUNCEMENTS

THE CHURCH OFFICE will be closed January 16th in recognition of Martin Luther King, Jr. Day.

THERE WILL BE A "PARENTING ROUND TABLE" on January 11th for MERGE's Wednesday night meeting featuring parents who have walked in our shoes. They will provide tips for surviving the early years and what we have ahead of us! We meet at 6pm in the Fellowship Hall for dinner and then we will send the kiddos up with Dot and her crew and then the discussions begin! Dessert and drinks will be provided, please bring your own dinner.

It is the middle of winter, what does that make you think of? Me too! Swimming! Let's take the kids swimming on Saturday, January 21st at Pullen Aquatic Center. We can meet at the front door at 3pm and go in together, swim for a little while and then dry off and play on the nearby playground (weather permitting of course!). The fee to get in is \$1 per child under 12 and \$3 for adults. Hope to see you come splash around!

Please feel free to email Stacie Topp (stacietopp@hotmail.com) with questions.

IT'S PRESCHOOL REGISTRATION TIME!

Saint Andrews Preschool is a children's ministry program for toddlers through five year olds. We sing and play, paint and share, discover and create and learn all morning long! Our teachers provide a fun, child-oriented, play-to-learn environment that gets kids ready for kindergarten and beyond.

Spaces are available for all ages, toddlers through fives, for the 2012-2013 school year. Church members have priority when registering... drop off a registration form any time before the January 27th deadline. If you would like to see our program in action, stop in for a tour any weekday from 9 am – 12 noon. You can also visit us on the web at www.sapc.com. Click on the "Preschool" tab to learn more about our program. Registration forms are in the church office, the preschool office and online. Questions? Contact Marj Jenkins at 847-9956 or mjenkins@sapc.com.

Women of Saint Andrews



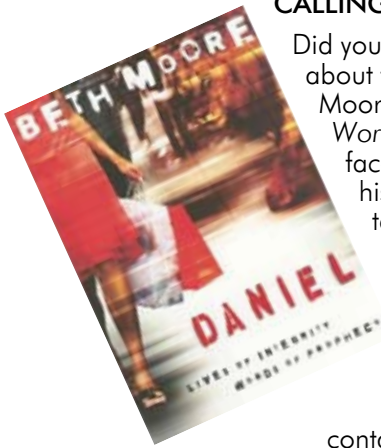
SPRING RETREAT - Blockade Runner, Wrightsville Beach, NC April 13 – 15, 2012

Join your fellow WOSA ladies for a beachfront weekend of learning, fellowship, worship, and a few surprises. During our weekend, we will take an introspective look at ourselves, our journeys as Christians and we will be learning about what it means to, and how to apply, 'walking the walk and talking the talk'. Register in the narthex or pick up a form in the church office!

CALLING ALL WOMEN...Join the Women's Bible Study!

Did you make a New Year's Resolution to learn more about the Bible? Then this study is for you - a Beth Moore offering called *Daniel: Lives of Integrity and Words of Prophecy*. "Just as the prophet Daniel faced unbelievable pressure to compromise his faith ... and was constantly confronted by temptations and threats, today's believers face similar trials."

We will meet on Tuesdays, from 9:30 to 11am, for 12 weeks from January 17th through April 3rd in room 6. The workbooks are \$16 and will be available in the narthex on Sunday mornings in January or contact Elaine Mueller at eamueller@earthlink.net. Childcare available upon request.



CHILDCARE POSITION

Saint Andrews is looking to hire someone to provide backup childcare for our Sunday morning nursery caregivers and to also work during special midweek or Sunday evening offerings. This involves working with children from newborn through 5th grade. The applicant should be at least 21 years of age; a background check will be done. If interested, please contact Ann Wright at awright@sapc.com.

Missions – Mike Schley, mSchley@fmsystems.com



IT'S CHILI TIME!

Orders will be taken in our narthex for meat and veggie chili today and January 16. The chili is \$10/quart; all sales benefit Loaves & Fishes ministry. This ministry service at-risk children and youth in our community.

ALTERNATIVE GIFT CATALOG UPDATE

Through Alternative Giving, members and friends of SAPC support local and international missions year-round. Giving via the catalog peaks at Christmas; we received over \$8,000 for 168 gifts from 44 families, of which 100% will go to the missions and ministries they designated. Thank you for your generosity and please keep the catalog in mind when Valentine's, Mother's Day, Father's Day, and other special dates like anniversaries and birthdays roll around! The monies these programs receive through the Alternative Gift Catalog is like an unexpected bonus - not promised, but much appreciated!

SOUPER BOWL OF CARING - CANS & NON-PERISHABLES NEEDED

Our annual Souper Bowl of Caring can collection kicks off next week, January 15. Please bring the large #10 cans for the Shepherd's Table Soup Kitchen, and/or smaller cans and non-perishable food items to help North Raleigh Ministries. We will collect these items in the sanctuary through February 5.

In the weeks ahead, look for more information in our weekly emails, bulletin announcements, our Facebook group page (Saint Andrews Presbyterian Church - Raleigh), and on Twitter (@SAPCgoodnews).

A THANK YOU FROM BACKPACK BUDDIES

BackPack Buddies thanks all the people and organizations who have helped us provide food, pack 80 + packs monthly, drive the 21 packs every Thursday to River Bend Elementary. This holiday season we received help from Sarah Circle, Ruth Circle, Cub Scout Pack 374, Angel Tree, Fun Fridays, and Children's Ministry. We continue to need back packs, food and drivers. If interested please contact Bonnie Millikan at bgmillikan@gmail.com or Nancy Bates at 872-5284. The BackPack Buddies is a InterFaith Food Shuttle program.

Adult Education – Peter Garland, petegarland22@yahoo.com

CONTINUING IN 2012 - Parenting Teens and Tweens

Sunday evenings, 7-8pm in room 6 downstairs

Facilitator: Lisa Huddleston

Childcare for older preschool and elementary age in Room 5

This weekly gathering will be a time of discussion and sharing, sparked by a scripture and thought or question for the day offered by Lisa. Saint Andrews' members, visitors and friends of friends are all welcome and encouraged to attend. Youth Group runs from 6-8pm and we encourage your teen's involvement in this ministry; however, please feel free to attend even if your child is not involved in youth group.

JANUARY 2012 MINI-SEMESTER for Adults, Sundays - 9:50-10:45am

Today, January 15, 22, 29 in Fellowship Hall - *Stories of Faith*: Come and share the great stories of faith found in scripture, and reflect on your own faith story. Led By Diane Knauf and Shelley Kane.

ONE-TIME CLASS: Sunday, January 15th

Issues of Faith and Life: an Occasional Series
"Who Should We Ordain?" The Church and Homosexuality

Led by Larry Duncan

January 15, 2012 from 6:30-8 pm

Need childcare for this class?

Sign up by January 11th on sapcJan15.eventbrite.com



**Wednesday
Evening
Lenten Class**

This Wednesday Evening
Pastor's Lenten Study includes
dinner and children's class

*February 1 – March 28
Dinner starts at 5:30pm
Class 6:15 - 7:00pm*

SAPC YOUTH - SINGING...DRAMA...AND A BIT OF THE GOSPEL!

DATES TO KNOW:

1/8: Youth Leadership Team Meeting, 4:30pm

1/12: Youth Committee Meeting

1/15: Ski Trip balance due

1/16: IFFS Volunteering

For additional details and announcements, please check the weekly youth email. To get on this distribution list, please email Anne at astark@sapc.com

What can we learn about our faith from a group of misfit high school students who share the emotions and drama of their lives through song? Dodge that slushie and head to the Youth Room on Wednesday nights to find out! In our new High School Bible Study, "The Gospel According to Glee", we'll explore the issues that Finn, Rachel, Artie, Mike Chang, Quinn, Brittany, and the other characters face from a faith perspective.

God's word is full of thoughts and stories about friendship, prayer, forgiveness, sexuality, getting along with parents, lying, and more. We'll watch clips, read scripture, and include some creative elements, too. Don your favorite Sue Sylvester Adidas tracksuit and come on out to our first gathering this week! See you at 7!



A Look Ahead at SAPC

January

- 9..... All Annual Report submissions due
- 11..... MERGE dinner and Bible study
- 15..... Children's Choir resumes
- 15..... Larry Duncan's one-time class, "Who Should We Ordain"
- 28..... Youth Bingo night fundraiser

February

- 1..... Lenten study begins at 6:15pm with adult program and children's class, dinner served prior to class at 5:30pm
- 5..... Children's Choir & Young Ringers at 11:00am, Souper Bowl of Caring, regular adult Sunday School schedule resumes, Congregational Annual Meeting
- 5..... T'N'T Super Bowl party at the Chocklett's home, more information to come
- 8..... Lenten study begins at 6:15pm with adult program and children's class, dinner served prior to class at 5:30pm
- 10-12..... Youth ski trip
- 15..... Lenten study begins at 6:15pm with adult program and children's class, dinner served prior to class at 5:30pm
- 18..... Presbytery meeting at Wake Forest Presbyterian
- 19..... Officer Installation and Ordination during 11am worship
- 22..... Ash Wednesday Service - Lenten study resumes February 29th
- 25..... Women's Tea
- 26..... Young Ringers participate at 9am and 11am
- 29..... Lenten study begins at 6:15pm with adult program and children's class, dinner served prior to class at 5:30pm

March

- 4..... Bells of Saint Andrews at 11am, FSU choir in concert at 7pm
- 18..... Youth Sunday, one service at 11:00am
- 23-25..... High School Youth Presbytery retreat

This Week - Please note the time below denotes event start time - to learn the set-up time, please call Cindy Ingalls at 847-1913, ext. 110. For all room or van reservations, email Cindy at cingalls@sapc.com.

Sunday, January 8th

- 8:00a..... Praise Team rehearsal: Sanctuary
- 8:45a..... Nurseries: Cana Class: room 17, Jerusalem Class: room 18, Nazareth: room 22, Bethlehem Nursery: room 29
- 9:00a Praise Service: Sanctuary**
- 9:50a..... Children's Sunday School - maps are in the hallways
- 9:50a..... Youth Sunday School: High School: Youth Room, Middle School: Youth Center, and Confirmation Class: room 3
- 9:50a..... Adult Sunday School: Stories of Faith - Fellowship Hall
- 10:15a..... Chancel Choir rehearsal: room 9
- 11:00a Traditional Worship: Sanctuary (2nd Grade Preparation for worship in room 3 and Children in Worship in rooms 4, 5, 6)**
- 4:30p..... Youth Leadership Team: youth room (room 24)
- 5:00p..... Youth Center open
- 6:00p..... MS and HS Youth Group
- 5:30p..... NO Children's Choirs, they resume next week
- 7:00p..... Parenting Teens class: room 6

Monday the 9th

- 6:45a..... Monday Morning Men: Fellowship Hall
- 5:30p..... Young Ringers: room 6
- 6:30p..... Disciple 4: Fellowship Hall
- 7:00p..... Handbells: room 6
- 7:00p..... Stephen Ministry: offsite at NRUMC

Tuesday the 10th

- 10:00a..... SAPC staff meeting: Conference Room
- 7:00p..... Stewardship Committee: Conference Room
- 7:00p..... Ruth Circle: offsite

Wednesday the 11th

- 6:00p..... Praise Team rehearsal: Sanctuary
- 6:00p..... MERGE: Fellowship Hall
- 7:00p..... HS Bible Study - The Gospel According to Glee: Youth Room (room 24)
- 7:00p..... Disciple 3: room 4
- 7:00p..... Chancel Choir rehearsal: room 9, childcare in the Youth Center

Thursday the 12th

- 7:00a..... MOSA Bible Fellowship: Fellowship Hall
- 10:00a..... Disciple 1: room 4
- 10:00a..... Piecemakers: room 6
- 10:00a..... Prayer Shawl Ministry: Conference Room
- 7:00p..... Youth Committee: room 24
- 7:00p..... Women of Saint Andrews Retreat Committee: Conference Room

Friday the 13th

- 7:30p..... Administration Committee: Conference Room
- 6:00p..... Worship and Music Committee: Conference Room

Saturday the 14th

- 9:00a..... Passage Home Workday: offsite

Stewardship – Virginia Parker, parkervg@earthlink.net

Contributions received from the Saint Andrews' congregation and friends in 2011 totaled \$681,591 in "estimated" giving and \$110,353 from "non-pledged" giving. Thank you to all who helped make this a great year at Saint Andrews!

We received \$1,438.00 for our Christmas Joy Offering, which is sent to PC(USA), where they offer financial assistance to current and retired church workers and financial support for racial/ethnic minorities at Presbyterian-related schools.

On Christmas Eve, donations of \$4,716.91 were given to the Pastor's Love offering. This fund is used to provide for our members and neighbors who are struggling and are in need of financial assistance.

**Saint Andrews Presbyterian Church - www.sapc.com;
on Facebook as Saint Andrews Presbyterian Church - Raleigh
Twitter @SAPCgoodnews**

7506 Falls of Neuse Rd., Raleigh, NC 27615, (847-1913, FAX - 847-9130)

Services: 9:00am Praise Service & 11am Traditional Worship

Office hours: Monday-Friday from 9am-4:00pm

Staff meetings: Tuesday mornings at 10:00am

For the latest church information, including a list of our elders, deacons and the committees they are assigned to, please see www.sapc.com. Our Clerk of Session is David Lane; Session typically meets on the 3rd Thursday of the month at 7 pm. Copies of minutes are on the Officer's bulletin board in the stairwell or in a binder in the office. We also invite you to visit PCUSA at www.pcusa.org

The Rev. Larry Duncan, Interim Senior Pastor - lduncan@sapc.com

The Rev. Diane Knauf, Associate Pastor - dknauf@sapc.com

WORSHIP & MUSIC - **Karrie Rushing**, Director of Music and Chancel Choir - krushing@sapc.com; **Jeff Tippett**, Contemporary Music Director - jtippett@sapc.com; **Tom Flynn**, Organist - tflynn@sapc.com; **Deanna Boone-Domres**, accompanist; **Jim Williams**, Sound Technician - jwilliams@sapc.com; **Jeremy Petersen**, Contemporary Service Assistant

CHILDREN'S - **Ann Wright**, Director of Children's Ministry - awright@sapc.com; **Amy Lawson**, Administrative Assistant; **Dot Kohlbach**, Nursery Coordinator

YOUTH - **Anne Stark**, Youth Director - astark@sapc.com; **Matt Fox**, HS Youth Intern; **Graham Hughes**, MS Youth Intern

STEPHEN MINISTRY - **Diane Knauf** - dknauf@sapc.com, 847-1913

OFFICE - **John Montague**, Business Administrator/Facilities - jmontague@sapc.com; **Pat Clement**, Front Desk - pclement@sapc.com; **Cindy Ingalls**, Administrative Assistant (Membership, Van/Room Reservations) - cingalls@sapc.com; **Virginia Raby**, Publications, web information - vraby@sapc.com;

Mark Stevens, Building and Grounds

PRESCHOOL - **Marj Jenkins**, Director - mjenkins@sapc.com, 847-9956